

## Regional dynamics of fractal dimension of the left ventricular endocardium from cine computed tomography images

Ashish Manohar  
Lorenzo Rossini  
Gabrielle Colvert  
Davis M. Vigneault  
Francisco Contijoch  
Marcus Y. Chen  
Juan C. del Alamo  
Elliot R. McVeigh

# Regional dynamics of fractal dimension of the left ventricular endocardium from cine computed tomography images

Ashish Manohar,<sup>a</sup> Lorenzo Rossini,<sup>a</sup> Gabrielle Colvert,<sup>b</sup> Davis M. Vigneault,<sup>b</sup> Francisco Contijoch,<sup>b,c</sup> Marcus Y. Chen,<sup>d</sup> Juan C. del Alamo,<sup>a</sup> and Elliot R. McVeigh<sup>b,c,e,\*</sup>

<sup>a</sup>University of California San Diego, Department of Mechanical and Aerospace Engineering, La Jolla, California, United States

<sup>b</sup>University of California San Diego, Department of Bioengineering, La Jolla, California, United States

<sup>c</sup>University of California San Diego, Department of Radiology, La Jolla, California, United States

<sup>d</sup>National Heart, Lung, and Blood Institute, National Institutes of Health, Laboratory of Cardiac Energetics, Bethesda, Maryland, United States

<sup>e</sup>University of California San Diego, Cardiology Division, Department of Medicine, La Jolla, California, United States

**Abstract.** We present a method to leverage the high fidelity of computed tomography (CT) to quantify regional left ventricular function using topography variation of the endocardium as a surrogate measure of strain. 4DCT images of 10 normal and 10 abnormal subjects, acquired with standard clinical protocols, are used. The topography of the endocardium is characterized by its regional values of fractal dimension ( $F_D$ ), computed using a box-counting algorithm developed in-house. The average  $F_D$  in each of the 16 American Heart Association segments is calculated for each subject as a function of time over the cardiac cycle. The normal subjects show a peak systolic percentage change in  $F_D$  of  $5.9\% \pm 2\%$  in all free-wall segments, whereas the abnormal cohort experiences a change of  $2\% \pm 1.2\%$  ( $p < 0.00001$ ). Septal segments, being smooth, do not undergo large changes in  $F_D$ . Additionally, a principal component analysis is performed on the temporal profiles of  $F_D$  to highlight the possibility for unsupervised classification of normal and abnormal function. The method developed is free from manual contouring and does not require any feature tracking or registration algorithms. The  $F_D$  values in the free-wall segments correlated well with radial strain and with endocardial regional shortening measurements. © 2019 Society of Photo-Optical Instrumentation Engineers (SPIE) [DOI: [10.1117/1.JMI.6.4.046002](https://doi.org/10.1117/1.JMI.6.4.046002)]

Keywords: x-ray computed tomography; cardiac imaging; regional cardiac function; fractal dimension.

Paper 19061RR received Mar. 7, 2019; accepted for publication Oct. 14, 2019; published online Nov. 8, 2019.

## 1 Introduction

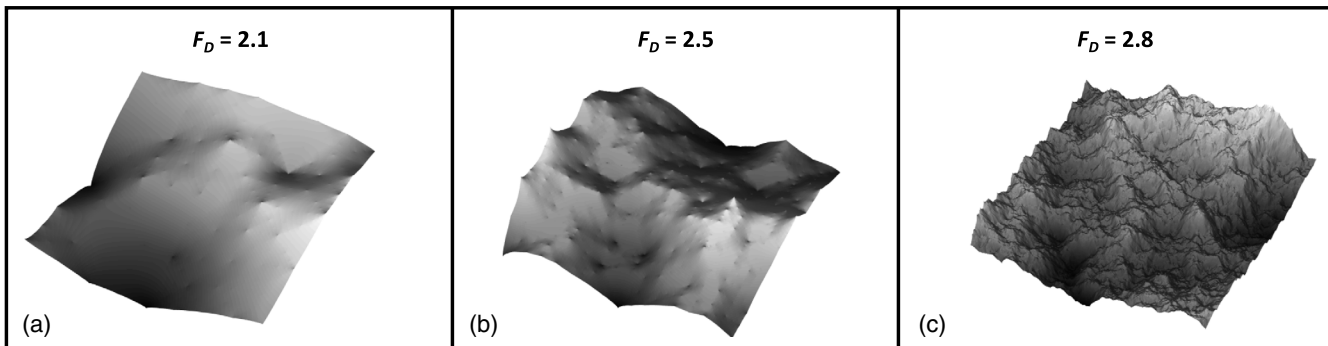
Over the past three decades, significant effort has been focused on developing robust and accurate methods for quantitative evaluation of regional cardiac function, which has implications in the diagnosis, treatment, and follow-up of patients with cardiac diseases such as myocardial ischemia,<sup>1,2</sup> heart failure,<sup>3</sup> cardiotoxicity,<sup>4</sup> and dyssynchrony.<sup>5,6</sup> Left ventricular (LV) ejection fraction (EF), global longitudinal strain (GLS),<sup>7</sup> and other global metrics have been useful in the diagnosis of heart disease; however, significant drops in EF are typically detectable only in advanced disease stages, and GLS is not a local measurement. Additionally, regional dysfunction often precedes global dysfunction and global metrics fail to identify specific regions of abnormally functioning cardiac tissue.

Recent advances in x-ray computed tomography (CT) technology have led to very short scan times ( $\sim 140$  ms for a full high-resolution 3-D volume of the heart), permitting measurement of 3-D motion of the whole heart for a full cardiac cycle within a single heartbeat acquisition.<sup>8–12</sup> Additionally, the superior spatial resolution of CT has made it possible to visualize and track fine endocardial features such as trabeculae carneae.<sup>13</sup> Viewing a simple surface rendered LV blood volume as a 3-D movie shows directly that the trabeculae undergo significant deformation during systolic contraction. The aim of this work was to exploit the high fidelity of x-ray CT to derive a simple metric of regional cardiac function with minimal operator

involvement and fast postprocessing of the images. We hypothesized that the variation of LV endocardial topography across the cardiac cycle, characterized by regional values of its surface fractal dimension ( $F_D$ ), could be obtained from simple threshold data and can serve as a surrogate measure of regional strain in those regions that have trabeculation. Other shape-based measures for cardiac motion analysis have been proposed and established. McEachen and Duncan<sup>14</sup> established a technique to quantify the nonrigid and nonuniform motion of the LV by matching local segments of the endocardial contour across time using a shape-based optimization function. Duncan et al.<sup>15</sup> proposed a shape-based model using the bending energy required to deform LV endocardial contours from an undeformed “normal” state to their individual characteristic shape, as a method to quantify abnormal variations in the end-diastolic shape of the LV, which are suggestive of infarcts and LV remodeling.

The fractal dimension of a surface like the endocardium is a quantitative measure of its geometric complexity.<sup>16</sup> A smooth surface has a dimension of 2, but surfaces with intricate topography can have higher fractal dimensions in the range of  $2 < F_D < 3$ , as they become increasingly volume filling. Figure 1 illustrates the relationship between the topographical complexity of a surface and its fractal dimension. This figure was created using the diamond-square algorithm for generating fractal surfaces via a fractional Brownian process.<sup>17</sup> Different surfaces were obtained for different values of the Hurst exponent  $H$ , which prescribes the

\*Address all correspondence to Elliot R. McVeigh, E-mail: [emcveigh@ucsd.edu](mailto:emcveigh@ucsd.edu)



**Fig. 1** Illustration of the relationship between fractal dimension ( $F_D$ ) and topography. (a)–(c) Varying amounts of topography corresponding to Hurst exponents of 0.9, 0.5, and 0.2 added to a regular square, resulting in  $F_D$  of 2.1, 2.5, and 2.8, respectively.

fractal dimension as  $F_D = 3 - H$ .<sup>16</sup> Figure 1(a) shows a gently warped square patch with  $F_D = 2.1$ . Figures 1(b) and 1(c) show increasing amounts of roughness resulting in fractal dimensions of 2.5 and 2.8, respectively.

Previously, Moore and Dasi<sup>18</sup> measured the global fractal dimension of the LV endocardium across the cardiac cycle from cine CT images. They reported that the endocardial trabeculae contract during systolic ejection, giving the endocardium its lowest dimension at end systole (global  $F_D = 2.02$ ) followed by their relaxation and subsequently the highest dimension of the endocardium at end diastole (global  $F_D = 2.2$ ). The difference between the end-diastolic and the end-systolic global  $F_D$  values was found to be statistically significant ( $p < 0.003$ ), suggesting that changes in endocardial  $F_D$  across the cardiac cycle are in accordance with the motion of the LV wall. Although this study provided useful insight in hypothesizing the role of the trabeculae in ejection, there was no measurement of regional values of endocardial  $F_D$  nor a correlation of  $F_D$  to regional myocardial function. Additionally, Captur et al.<sup>19</sup> used fractal analysis on short-axis CMR images of 135 individuals and reported that patients suffering from LV noncompaction (LVNC) had significantly higher values of endocardial  $F_D$  ( $p < 0.00001$ ). Although the study provided a new quantitative and reproducible estimate of LVNC, there was again no regional analysis nor did they relate the  $F_D$  to regional myocardial function. Additionally, they computed a global  $F_D$  for 2-D short-axis MR slices, which require multiple heartbeats and are subject to through plane motion. In this work, we quantify regional LV function in both normal and abnormal left ventricles from true 3-D high-resolution cine CT images acquired within a single heartbeat and compare the regional  $F_D$  estimates to radial strain and endocardial regional shortening (RS) measurements.

## 2 Methods

### 2.1 Subjects

For this study, 4DCT scans of 20 human subjects (4 females and 16 males) acquired from two centers [the U.S. National Institutes of Health (NIH), Bethesda, Maryland, and the University of California San Diego (UC San Diego), California] were used. All subjects were scanned under IRB approved protocols at the two centers and each scan sampled the entire cardiac cycle of one heartbeat. Subjects were categorized to have normal function if the following three conditions were satisfied.

- (1) EF > 60% as measured from CT.
- (2) No wall motion abnormalities observed on the cine CT images.
- (3) Peak end-systolic radial strain >50%<sup>20</sup> as measured from the CT images using the Aquarius iNtuition (TeraRecon Inc.) analysis package, shown in Fig. 2.

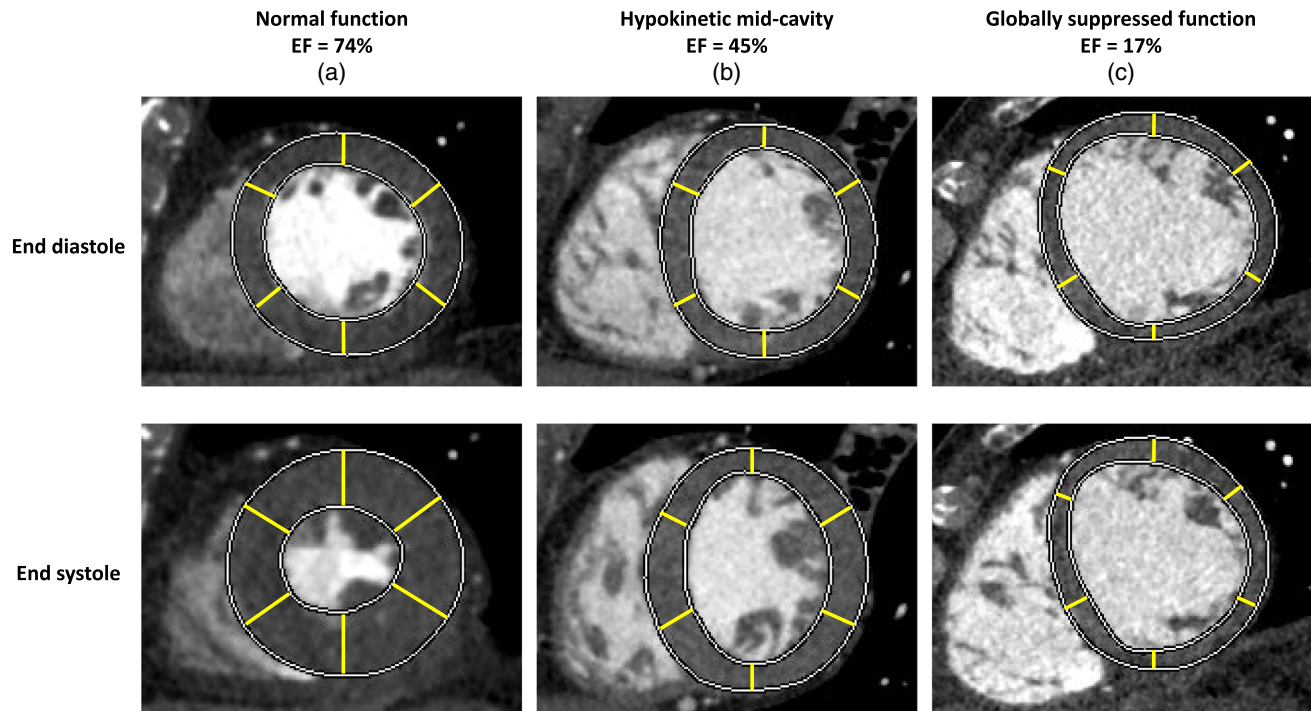
Based on the aforementioned, 10 of the 20 subjects were categorized to have normal LV function; the remaining 10 were categorized as abnormal. Additionally, all abnormal subjects had an expert radiologist and cardiologist clinical assessment. The normal and abnormal subjects had ages of (mean  $\pm$  SD)  $63 \pm 15$  years and  $63 \pm 19$  years, respectively.

### 2.2 CT Imaging

The CT images were acquired using standard imaging protocols prescribed by the two clinical centers. The 20 subjects were scanned using two different scanner models: a 320 detector-row (Aquilion ONE, Canon Medical, Otawara, Japan) at NIH and UC San Diego and a 256 detector-row (Revolution CT, General Electric Medical Systems, Wisconsin) at UC San Diego, both of which enabled complete coverage of the heart from a single table position. The images were acquired using an electrocardiogram (ECG) gated protocol with inspiratory breath-hold. Optimal opacification from contrast dye was achieved using real-time bolus tracking. For each image, 70 to 100 ml (depending on patient weight) of Iopamidol (Isovue 370, Bracco) was injected at 5 ml per second with a 40 ml saline flush.

Dose modulation across the cardiac cycle was not used in any of the 20 subjects in order to avoid a temporal change in image quality due only to changing tube current. In this way, the temporal evolution of fractal dimension was used as a test of the reproducibility of the calculation. A region of interest (ROI) was drawn inside the LV blood pool to estimate the signal-to-noise ratio (SNR), which was calculated as the ratio of the mean to the standard deviation of the Hounsfield units (HU) within the ROI. The mean SNR values found in the normal and abnormal subjects were (mean  $\pm$  SD)  $14.5 \pm 1.5$  and  $14 \pm 3$ , respectively.

The images were reconstructed using each manufacturer's standard reconstruction algorithm as implemented clinically. The scans were reconstructed into images of  $512 \times 512$  pixels with in-plane resolutions between 0.32 and 0.48 mm and between 100 and 320 slices with resolutions of 0.5 to 1 mm in the  $z$  direction. Reconstruction was performed at regular



**Fig. 2** Radial strain measurements by traditional contouring methods in three sample subjects. The top panel shows mid-cavity short-axis slices at end diastole and the bottom panel shows mid-cavity short-axis slices at end systole; both panels are in the traditional AHA orientation. The epicardial and the endocardial contours were automatically generated using the Aquarius iNtuition (TeraRecon Inc.) analysis package with necessary user intervention to manually correct identified contours. The yellow rays are visual aids representing the wall thickening in each of the six traditional AHA segments. (a) Subject with normal function and an EF of 73%. (b) Subject with a hypokinetic mid-cavity and an EF of 45%. (c) Subject with global dysfunction and an EF of 17%. AHA, American Heart Association; EF, ejection fraction.

intervals of the  $R - R$  phase of the ECG, with 5% and 10% being the minimum and maximum intervals. Neither subject enrollment nor image reconstruction was performed for the purpose of our particular study. The images used in this work were directly obtained from the clinic; hence, were reconstructed with different fields of view and slice thicknesses as determined by the clinical protocol used for that study.

### 2.3 Segmentation of the LV Endocardium

Image processing was performed using in-house command scripts developed in MATLAB (Mathworks Inc.), unless specified otherwise. All images were input into the analysis software as anonymized DICOM files. Only standard, well characterized image processing steps were used in the segmentation process in order to highlight the fractal dimension measurements; not a segmentation technique. A summary of the process is shown in Fig. 3. The main steps were as follows.

1. All images were resampled to an isotropic resolution of  $0.3 \times 0.3 \times 0.3 \text{ mm}^3$ . This resolution was chosen based on the highest native resolution of our images to avoid aliasing effects by down-sampling to a lower resolution.
2. The LV blood pool was segmented and binarized by applying a suitable threshold between 250 and 700 HU, which was set by the user after estimating the

mean and standard deviation of the HU within the blood pool according to the following equation:

$$T = \overline{\text{HU}}_{\text{LV}} - 6 * \sigma_{\text{LV}}, \quad (1)$$

where  $T$  is the input threshold,  $\overline{\text{HU}}_{\text{LV}}$  is mean signal of the blood in a 4000 pixel ROI within the blood pool, and  $\sigma_{\text{LV}}$  is the standard deviation around that mean.

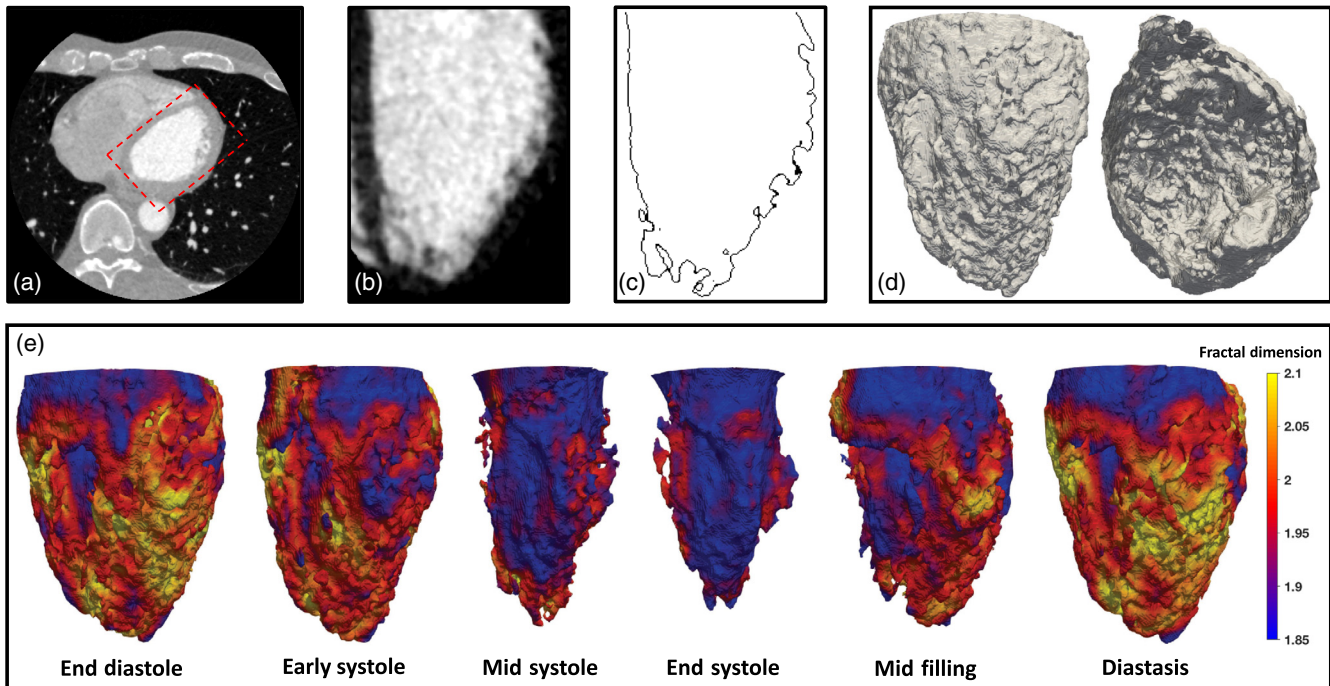
3. The coronaries and any remnants of the right ventricle (RV) were automatically pruned by retaining the single largest connected region.
4. The endocardium was extracted from the binary LV blood pool using a 3-D discrete Laplacian filter.<sup>21</sup>

### 2.4 Calculation of Fractal Dimension

The calculation of  $F_D$  was performed using in-house code developed in the FORTRAN programming language. Regional characterization was achieved by calculating the  $F_D$  of the LV endocardium contained within local neighborhoods (subsets) of  $32 \times 32 \times 32$  voxels, each of which corresponded to a volume of  $9.6 \times 9.6 \times 9.6 \text{ mm}^3$ . A box-counting algorithm was used to compute  $F_D$  as<sup>16</sup>

$$F_D = -\frac{\log[N(j)]}{\log(j)}, \quad (2)$$





**Fig. 3** Steps of the proposed method. (a) Axial slice of a CT image with the LV defined by the dashed red box. (b) Long-axis slice of the LV blood pool looking at the anterior wall with the inferior wall hidden from view, the septum on the left, and the lateral wall on the right. (c) Long-axis slice of the LV endocardium [same view angle as (b)] extracted from the binarized LV blood pool. (d) 3-D surface renderings of the LV endocardium showing topography of trabeculae carneae. The left view is of the free wall of the endocardium, with the anterior wall on the left, the inferior wall on the right, and the septum hidden from view. The right view shows the interior of the LV cavity to highlight the texture of the trabeculae, looking from the base down into the apex with the inferior wall at 12:00, the lateral wall at 3:00, the anterior wall at 6:00, and the septum at 9:00. (e) 3-D surface renderings of the LV endocardium with its regional  $F_D$  maps across six cardiac phases, looking at the free wall of the LV with the septum hidden from view, the anterior wall on the left and the inferior wall on the right. During systolic contraction, the trabeculae collapse inward upon each other, giving rise to a smoother topography of the endocardium and hence to lower values of  $F_D$ .

where  $N(j)$  is the number of boxes containing nonzero voxels within a grid defined by cubic boxes of size (i.e., edge length)  $j$ . The entire LV endocardium was characterized by moving the local neighborhood by eight voxels sequentially in the  $x$ ,  $y$ , and  $z$  directions. For each neighborhood, the box size varied between  $j = 1$  and  $j = 16$  and  $F_D$  was obtained by linear regression of  $\log[N(j)]$  with respect to  $\log(j)$ . The computed regional  $F_D$  values were linearly interpolated back onto every voxel of the LV endocardium, completing its regional characterization as shown in Fig. 3(e). The box-counting algorithm was validated using synthetic standard fractals of known  $F_D$ , obtaining excellent agreement (Sec. 5).

## 2.5 Calculation of Average Fractal Dimension in 16 AHA Segments

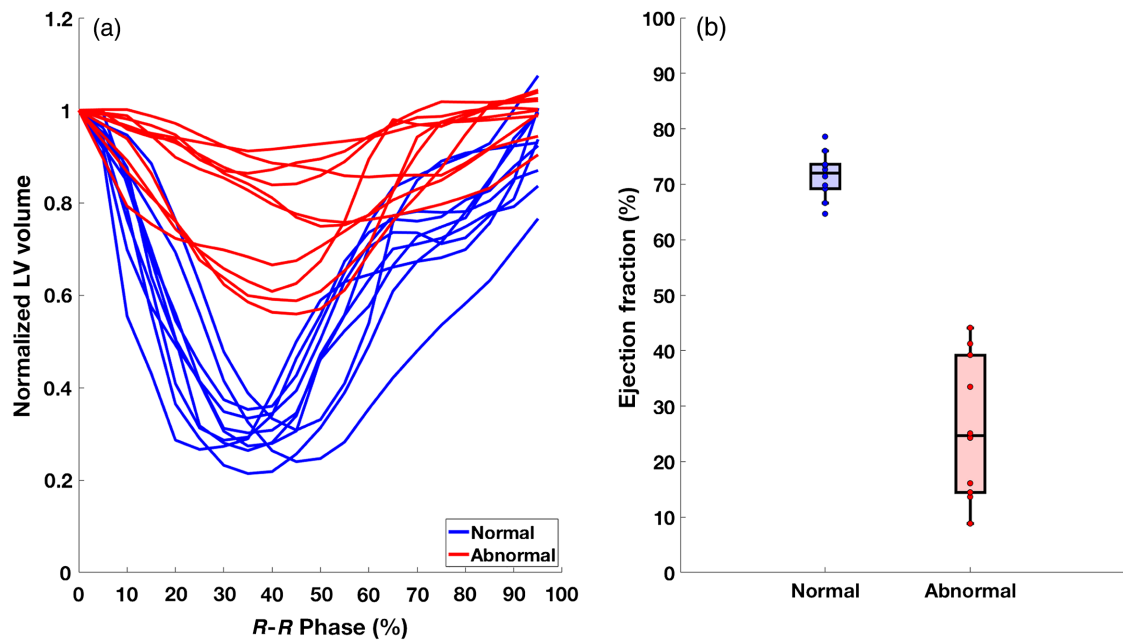
The endocardium at each time frame was divided into the 16 standard American Heart Association (AHA) segments<sup>22</sup> and the  $F_D$  of each segment was calculated as the arithmetic mean of all voxel values within that segment. The temporal evolution of  $F_D(t, s)$  for each segment  $s$  was mapped onto 20 time points  $t$  across the  $R - R$  interval from 0% through 95% and was smoothed using a low-pass filter (first three Fourier harmonics).

## 2.6 Correlation Between Peak Systolic Radial Strain and Peak Systolic Change in Regional $F_D$

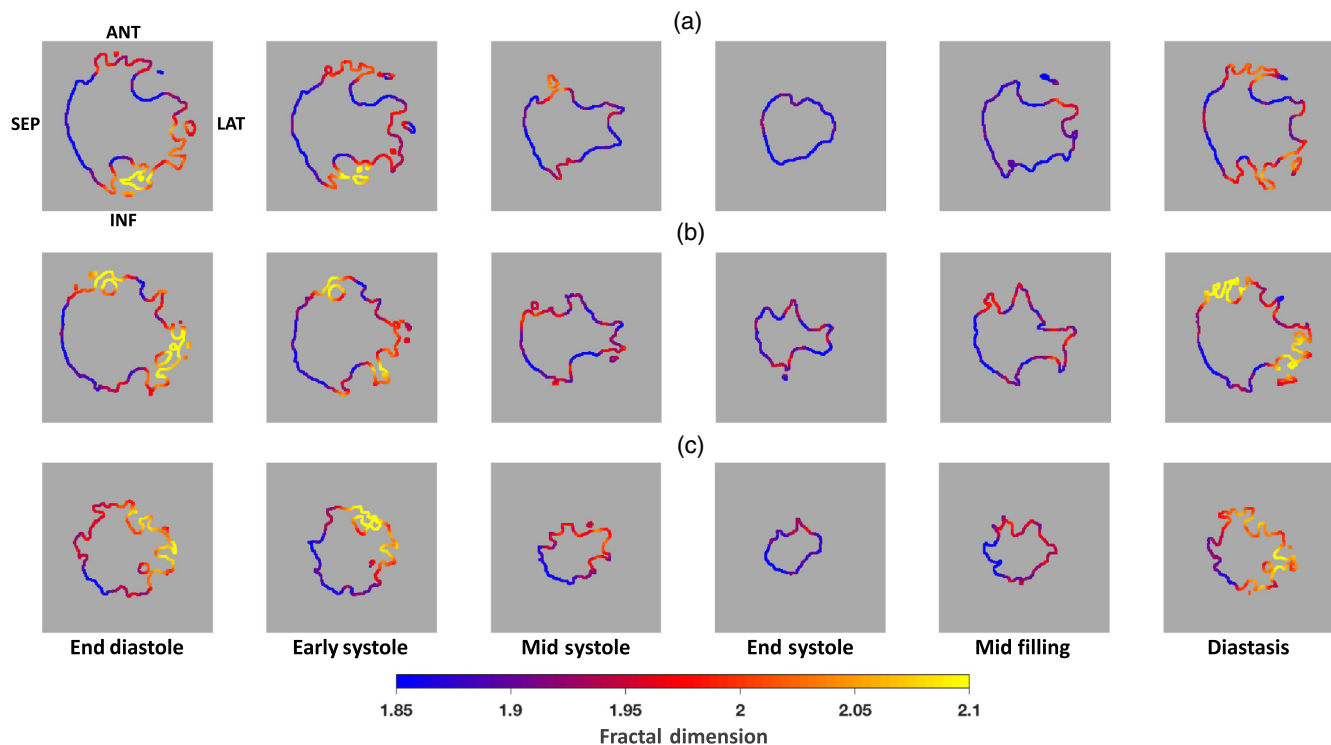
Peak end-systolic radial strain ( $\epsilon_{rr}$ ) measurements were acquired in all 16 AHA segments for all 20 subjects used in the study. The measurements were made using the Aquarius iNtuition (TeraRecon Inc.) analysis package by drawing epicardial and endocardial contours at end diastole and end systole as shown in Fig. 2. From these contours, percent radial thickening (radial strain) was calculated for each of the 16 AHA segments. Although the analysis package generated automatic epicardial and endocardial contours, user intervention was often required to manually correct identified contours. Peak systolic change in  $F_D$  ( $\Delta F_D$ ) was also calculated in all 16 AHA segments for all subjects and  $\epsilon_{rr}$  was plotted against  $\Delta F_D$  as a scatter plot.

## 2.7 Correlation between Temporal Changes in $F_D$ and Temporal Changes in Endocardial Regional Shortening

In order to evaluate if the temporal changes in regional  $F_D$  correlated with changes in LV endocardial RS across the cardiac cycle, we compared results from the  $F_D$  analysis with results from the recently developed SQUEEZ algorithm<sup>13</sup> on the same set of images. SQUEEZ has been shown to correlate well with



**Fig. 4** Global LV function of all 20 study subjects: (a) normalized LV volume versus time across the  $R - R$  cycle for all subjects. (b) Boxplot showing the range of EF for the two cohorts. The normal cohort had a significantly higher EF than the abnormal cohort ( $72\% \pm 4\%$  versus  $26\% \pm 12\%$ ,  $p < 0.00001$ ). EF, ejection fraction.



**Fig. 5** Variations in complexity of a normal LV endocardial surface across the cardiac cycle. Short-axis slices of a representative normal subject (EF 73%) at three different regions (a) basal, (b) mid-cavity, and (c) apex of the LV endocardium across six phases of the cardiac cycle. The regional values of  $F_D$  are represented by the pixel colors in the image. The orientation of the endocardium is anterior wall at 12:00, lateral wall at 3:00, inferior wall at 6:00, and septum at 9:00. All three regions showed a uniform decrease in topographical complexity of the endocardium during systole.

MRI tagging derived circumferential shortening.<sup>23</sup> Our use of SQUEEZ to derive RS in this study was driven by the fact that the two metrics ( $F_D$  and SQUEEZ) were derived from the same images. This eliminated the problem of attempting to measure strain in hearts at different times (as is the case for comparisons between different imaging techniques such as CT versus echocardiography or CT versus MRI). The correlation with RS was performed as a comparison, not as a validation because RS derived from CT has not yet been accepted as a “gold standard” for endocardial strain.

SQUEEZ is a measure of endocardial 2-D strain (it is the geometric mean of circumferential and longitudinal strain—it does not measure radial strain). RS = SQUEEZ-1 is measured by tracking features on the endocardium from 4DCT data and is computed as the square root of the ratio of areas of corresponding patches between a template mesh and a target mesh according to the equation:

$$RS = \sqrt{\frac{A(\nu, t)}{A(\nu, 0)}} - 1, \quad (3)$$

where  $A(\nu, t)$  is the area of a patch  $\nu$  at time  $t$  and  $A(\nu, 0)$  is the area of the same patch at time  $t = 0$  (end diastole).

A principal component analysis (PCA) was performed on the temporal profiles of  $F_D$  and RS across the cardiac cycle for all AHA segments. This was done for two reasons: (1) to evaluate the possibility of achieving an unsupervised classification of

normal and abnormal function and (2) as a comparison between  $F_D$  and RS. The PCA was performed independently for both metrics by pooling all subjects together with no prior labeling. For simplicity, we kept the first two PCA modes for both metrics and approximated  $F_D(t)$  and RS( $t$ ) as

$$F_D(t) \approx a_1\psi_1(t) + a_2\psi_2(t), \quad (4)$$

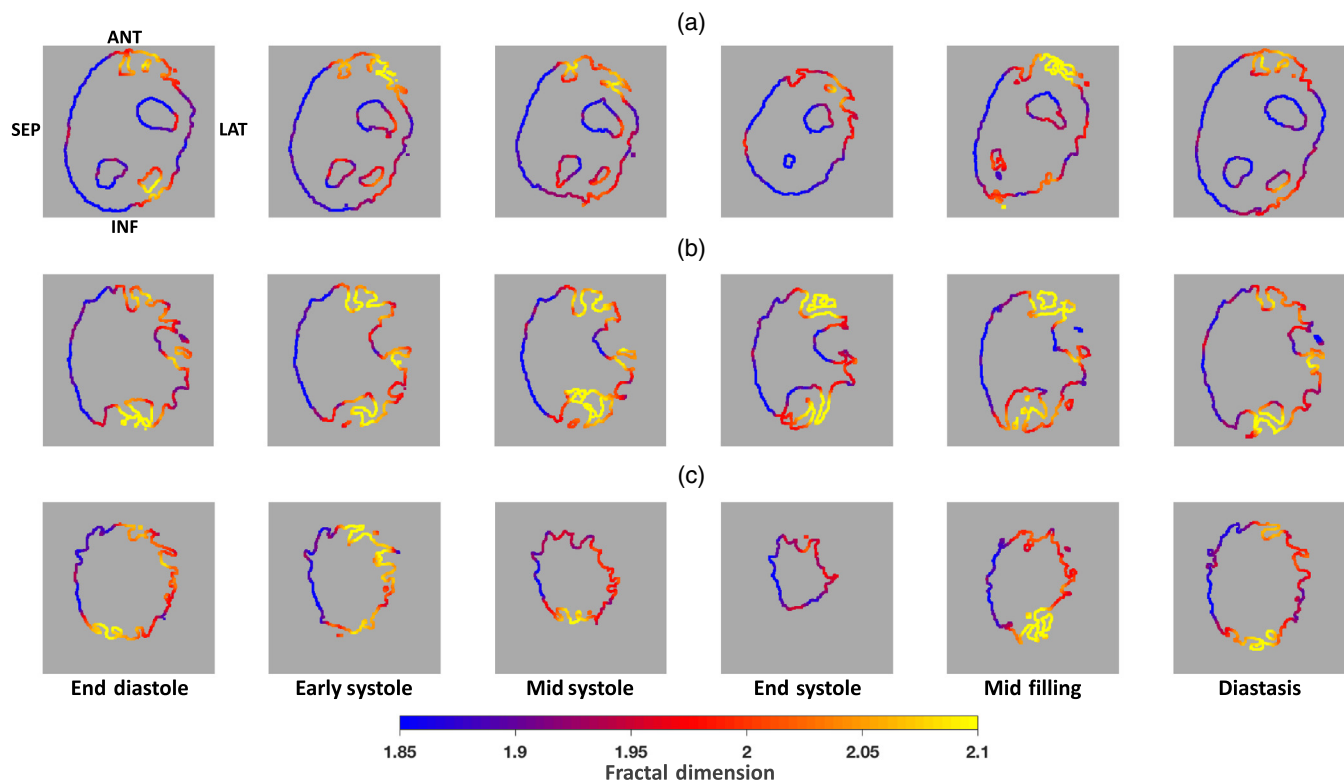
$$RS(t) \approx b_1\phi_1(t) + b_2\phi_2(t), \quad (5)$$

where the first modes  $\psi_1(t)/\phi_1(t)$  and the second modes  $\psi_2(t)/\phi_2(t)$  capture patterns of slow- and fast-wall motion, respectively.

### 3 Results

#### 3.1 Global Left Ventricular Function

Figure 4(a) represents the variation of normalized LV volume versus time for all 20 subjects analyzed. The data show that subjects who were classified as normal, experienced similar ventricular contraction and relaxation, and their function was distinctly greater than those classified as abnormal. Accordingly, the cohort of normal subjects had a significantly higher EF ( $72\% \pm 4\%$ ) than the cohort of abnormal subjects [ $26\% \pm 12\%$ ,  $p < 0.00001$ ; Fig. 4(b)].



**Fig. 6** Variations in complexity of a regionally hypokinetic LV endocardial surface across the cardiac cycle. Short-axis slices of a representative abnormal subject with regional LV dysfunction (EF 45% and a hypokinetic mid-cavity) at three different regions (a) basal, (b) mid-cavity, and (c) apex of the LV endocardium across six phases of the cardiac cycle. The regional values of  $F_D$  are represented by the pixel colors in the image. The orientation of the endocardium is anterior wall at 12:00, lateral wall at 3:00, inferior wall at 6:00, and septum at 9:00. Panel (b) showed abnormally low variation of  $F_D$  across the cardiac cycle, consistent with mid-cavity hypokinesia.

### 3.2 Regional Left Ventricular Function

Figure 5 shows the variation in endocardial topography across six phases of the cardiac cycle in representative short-axis slices of the normal subject shown in Fig. 2(a). The pixel colors represent the regional values of  $F_D$  of the endocardium. The data show a uniform decrease in topographical complexity of the base [Fig. 5(a)], mid-cavity [Fig. 5(b)], and apex [Fig. 5(c)] regions of the LV during systolic contraction, followed by an equivalent increase during diastolic relaxation. The regional values of  $F_D$  reflect these variations in the surface topography of the endocardium, supporting the hypothesis that the endocardial surface becomes smoother during systole due to the combined effect of the convergence of the trabeculae carneae and the finite resolution of the scanner.

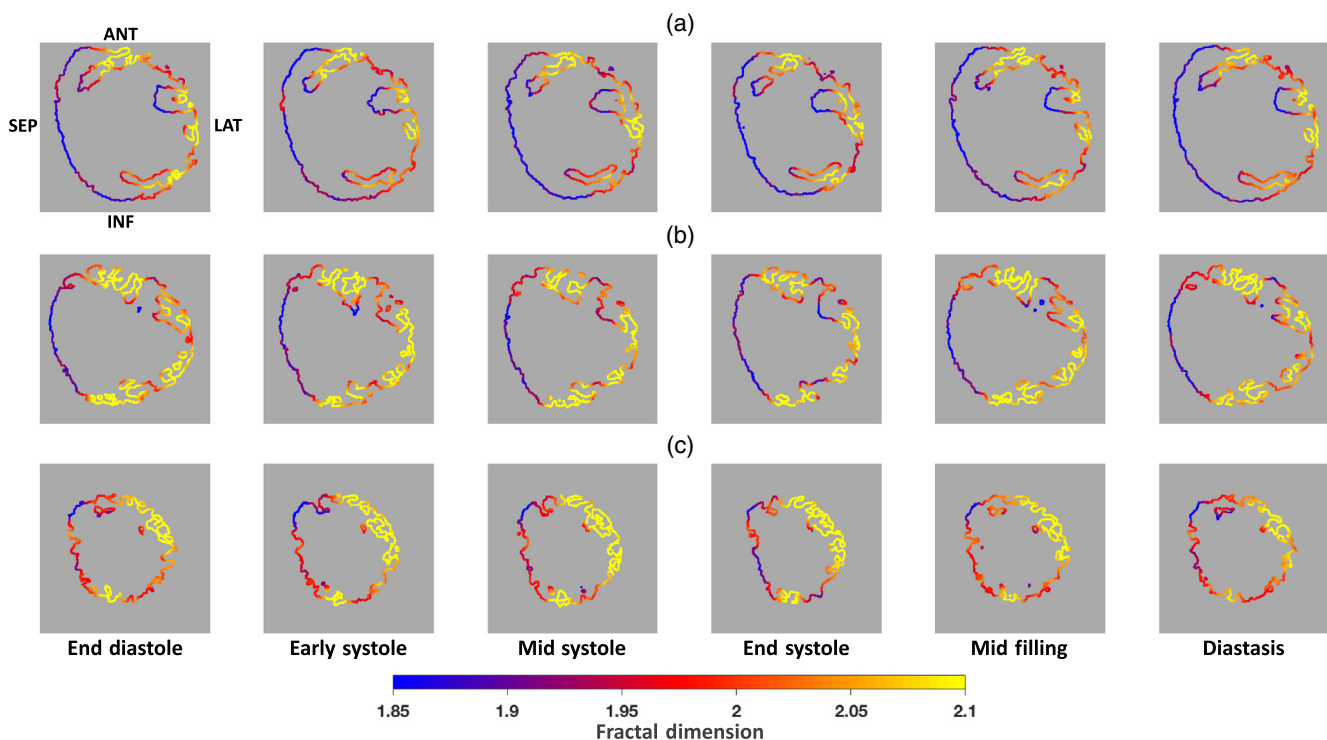
In contrast, Figs. 6 and 7 show similar sets of endocardial short-axis slices for two representative abnormal subjects, one exhibiting regional dysfunction and the other exhibiting global dysfunction. The subject shown in Fig. 6 is the same as the subject shown in Fig. 2(b), having an EF of 45%. The regional values of  $F_D$  reveal hypokinesia in the mid-cavity region [Fig. 6(b)], where  $F_D$  remains high-valued across the cardiac cycle, particularly at end systole. However, the  $F_D$  values are consistent with normal function at the apex [Fig. 6(c)].

The subject shown in Fig. 7 has global LV dysfunction and is shown in Fig. 2(c), having an EF of 17%. Consistent with this subject's global LV dysfunction, the  $F_D$  analysis found a lack of topography variation across the cardiac cycle in all LV regions.

In fact, the maps of endocardial  $F_D$  at the LV base [Fig. 7(a)], mid-cavity [Fig. 7(b)], and apex [Fig. 7(c)] were almost identical between consecutive time frames.

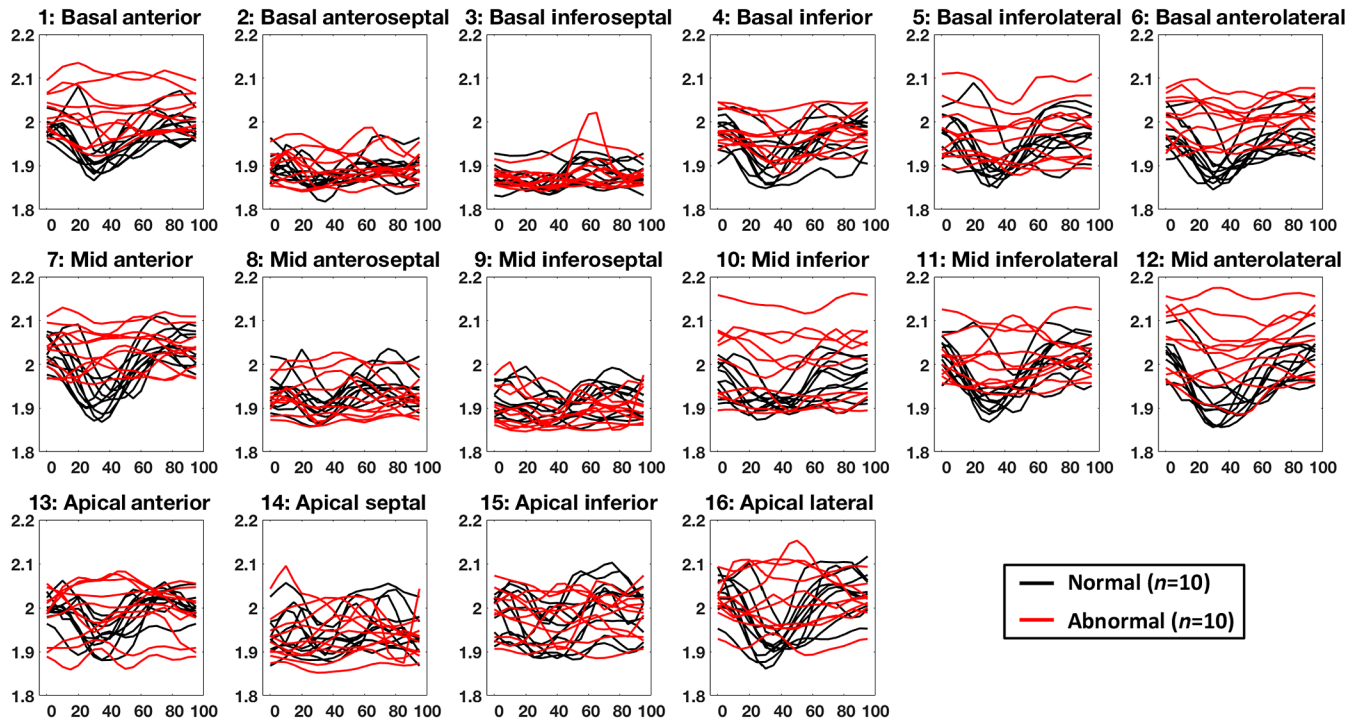
Figure 8 displays temporal profiles of the spatially averaged  $F_D$  in all 16 AHA segments for the 20 subjects analyzed. The  $F_D$  profiles of the abnormal subjects showed smaller changes during the cardiac cycle than the normal subjects in all free-wall segments. Specifically, they did not follow the normal trend consisting of a marked systolic decrease in  $F_D$  followed by an increase during diastolic relaxation; instead,  $F_D$  remained elevated with modest temporal fluctuations in the abnormal cases. The  $F_D$  in the septal segments, however, did not reflect this trend between the normal and abnormal subjects. This was due to the lack of trabecular tissue on the septal wall; hence texture variation across the cardiac cycle was minimal. These data suggest that it may be possible to use the time profiles of regional endocardial  $F_D$  as surrogate markers of free-wall LV function.

Additionally, the method can be performed using only the end-diastolic and end-systolic time frames to obtain functional estimates, thereby reducing patient exposure to radiation. To illustrate this point, Fig. 9 shows the mean percentage change in  $\Delta F_D$  values for normal and abnormal subjects in all free-wall segments computed from just the end-diastolic and end-systolic time frames. The values for the normal and abnormal cohorts were significantly different ( $5.9\% \pm 2\%$  versus  $2\% \pm 1.2\%$ ,  $p < 0.00001$ ). Full  $R-R$  image data were used in this study to demonstrate the reproducible nature of the measurements.



**Fig. 7** Variations in complexity of a globally hypokinetic LV endocardial surface across the cardiac cycle. Short-axis slices of a representative abnormal subject with global LV dysfunction (EF 17%) at three different regions, (a) basal, (b) mid-cavity, and (c) apex, of the LV endocardium across six phases of the cardiac cycle. The regional values of  $F_D$  are represented by the pixel colors in the image. The orientation of the endocardium is anterior wall at 12:00, lateral wall at 3:00, inferior wall at 6:00, and septum at 9:00. All three regions showed no significant change in topography, consistent with the fact that the subject had globally suppressed function.





**Fig. 8** Regional  $F_D$  versus  $\%R - R$  in all 16 AHA segments for all 20 subjects. The normal subjects showed a characteristic decrease in  $F_D$  in the free-wall segments during systole, whereas the  $F_D$  in the abnormal subjects remained elevated with modest temporal fluctuations. AHA, American Heart Association.

### 3.3 Comparison between $\varepsilon_{rr}$ and $\Delta F_D$

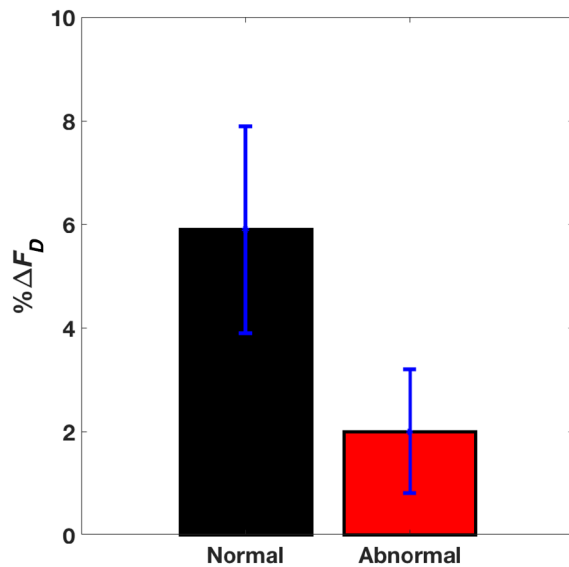
Peak end-systolic radial strain ( $\varepsilon_{rr}$ ) was measured in all 16 AHA segments for all subjects used in the study. Figure 10 plots  $\varepsilon_{rr}$  against the corresponding value of  $\Delta F_D$  for each subject in all 16 AHA segments. Even though the two metrics measure fundamentally different physical quantities, in the small number of

subjects,  $\varepsilon_{rr}$  and  $\Delta F_D$  showed a consistent relationship in the free-wall segments. A  $\Delta F_D$  threshold of 0.07 (vertical dashed blue lines in Fig. 10) differentiated normal from abnormal function with an accuracy of 86% in the 11 nonseptal segments.

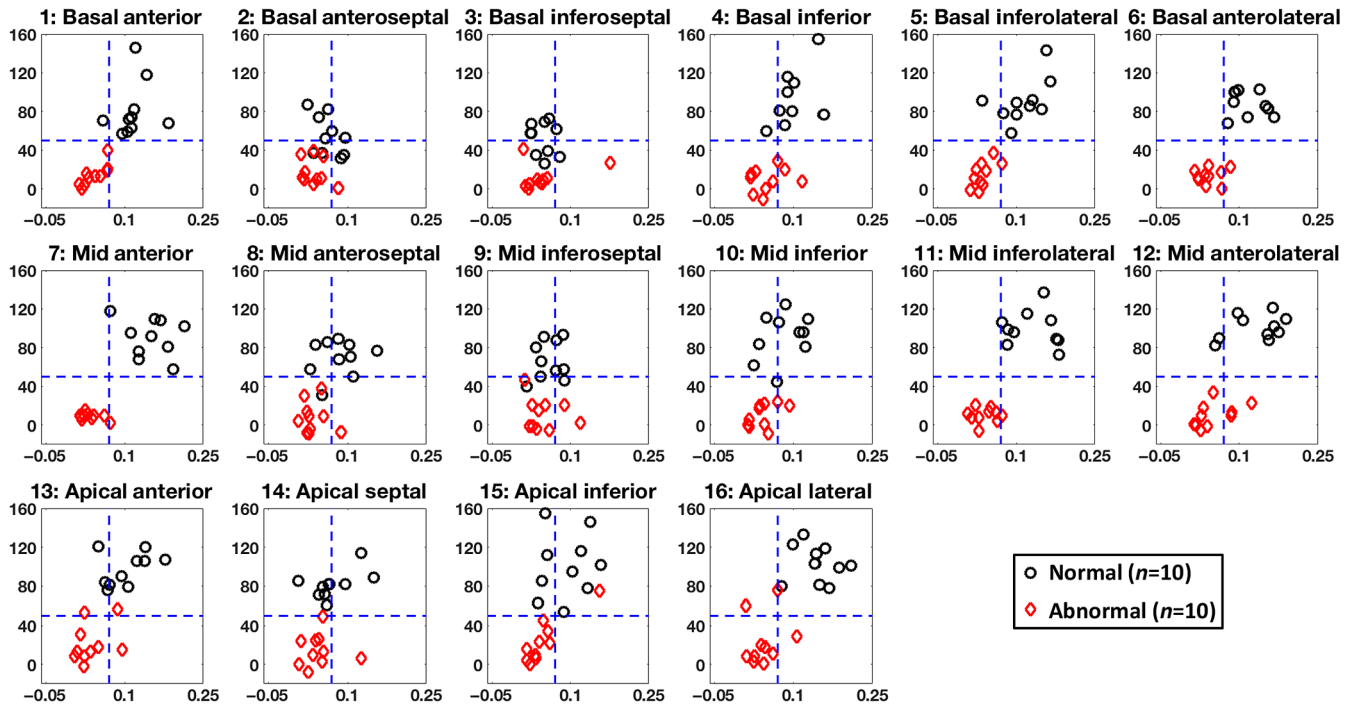
### 3.4 Comparison between Temporal Profiles of RS and Temporal Profiles of $F_D$

The data presented already suggest that unsupervised analysis of the main features of the regional  $F_D(t)$  profiles might provide a means for differentiating normal from abnormal wall motion. To provide proof of concept of this idea, a PCA was performed on the  $F_D(t)$  profiles. Figure 11 (top panel) shows the PCA analysis on the  $F_D(t)$  profiles in a sample free-wall AHA segment. As described in Sec. 2.7, only the first two PCA modes were retained for simplicity [Fig. 11(b)] and when the weights of the first mode ( $a_1$ ) were plotted against those of the second mode ( $a_2$ ) for all subjects, the normal and abnormal subjects clustered on opposite sides of the  $a_1 + a_2 = 0$  diagonal [Fig. 11(c)]. This result implies that uncomplicated data compression algorithms might be developed for unsupervised classification of normal and abnormal function from  $F_D(t)$ .

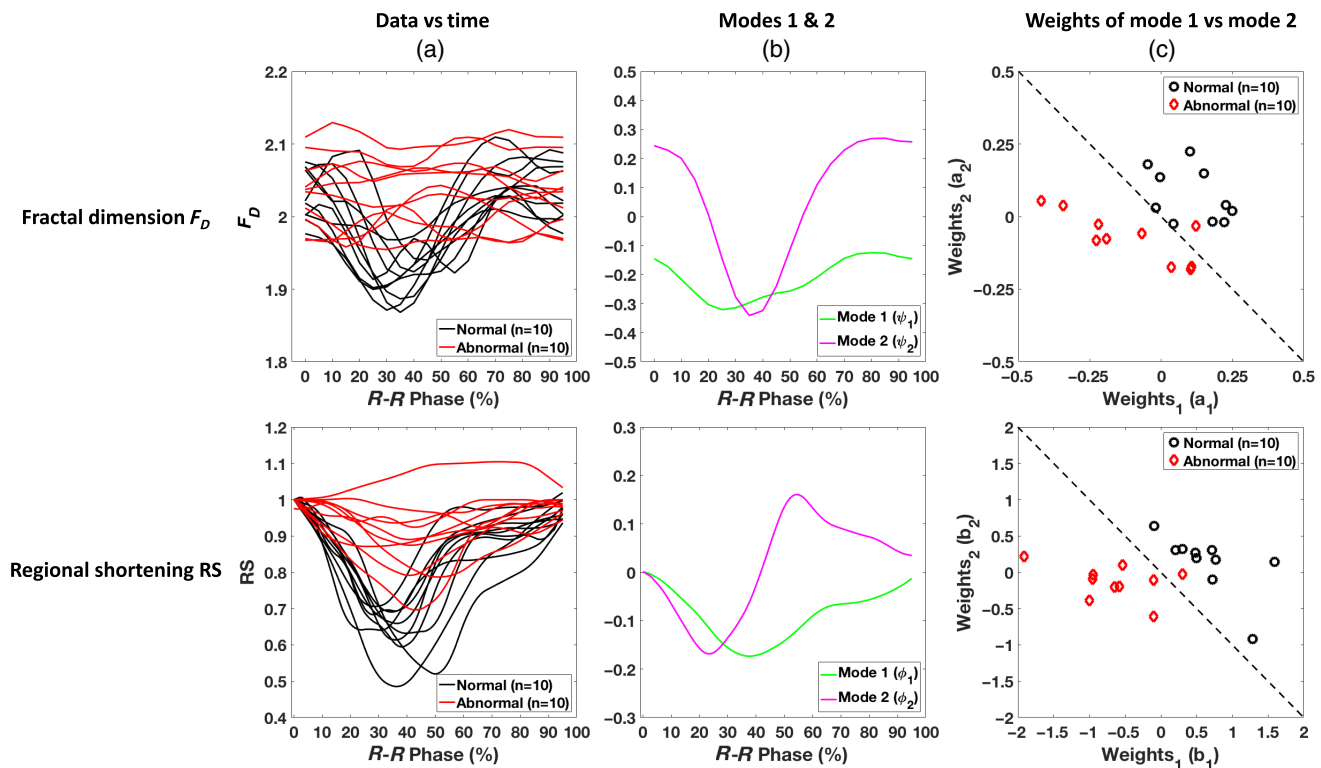
Additionally, to put this result into context, a PCA was performed in an identical manner on the RS(t) profiles. Figure 11 (bottom panel) shows the PCA analysis on the RS(t) profiles in the same sample AHA segment as for the  $F_D(t)$  profiles. Again, when the weights of mode 1 ( $b_1$ ) were plotted against those of mode 2 ( $b_2$ ) for all subjects, the normal and abnormal subjects clustered on opposite sides of the  $b_1 + b_2 = 0$  diagonal, in a similar manner to the PCA components of the regional  $F_D(t)$  profiles. Table 1 summarizes the PCA results performed on the  $F_D(t)$  and RS(t) profiles for all 16 AHA segments. All metrics were calculated based on the secondary diagonal differentiating



**Fig. 9** Mean peak systolic change in  $F_D$  ( $\Delta F_D$ ) between the end-diastolic and the end-systolic phases in all free-wall segments for all 20 subjects. Normal and abnormal subjects showed statistically different percentage changes in  $\Delta F_D$  ( $5.9\% \pm 2\%$  versus  $2\% \pm 1.2\%$ ,  $p < 0.00001$ ). AHA, American Heart Association.



**Fig. 10** Correlation between peak systolic radial strain ( $\epsilon_{rr}$ , shown as % on the y axis) and peak systolic change in  $F_D$  ( $\Delta F_D$ , shown on the x axis) in all 16 AHA segments for all 20 subjects used in the study. The dashed blue lines show the thresholds for  $\epsilon_{rr}$  (50%; horizontal) and  $\Delta F_D$  (0.07; vertical) to differentiate normal from abnormal function. The  $\epsilon_{rr}$  threshold value of 50% was obtained from literature,<sup>20</sup> the  $\Delta F_D$  value was the threshold calculated that optimized the accuracy (86%) of the test in the 11 nonseptal segments. AHA, American Heart Association.



**Fig. 11** PCA on the regional values of  $F_D(t)$  (top panel) and  $RS(t)$  (bottom panel) in a sample free-wall AHA segment for all 20 subjects. (a) Data ( $F_D$  and  $RS$ ) versus time across the cardiac cycle for all subjects. (b) The first two modes (components) of the analysis as a function of time. (c) Weights of mode 1 plotted against the weights of mode 2 for all subjects. AHA, American Heart Association.

**Table 1** Summary of the PCA on the  $F_D(t)$  and  $RS(t)$  profiles for all 16 AHA segments in all 20 subjects. All metrics were calculated based on the secondary diagonal differentiating the weights of mode 1 when plotted against those of mode 2 of the PCA. Subjects on the bottom left of the secondary diagonal were classified as true positive and those on the top right of the secondary diagonal were classified as true negative. Septal segments lacking trabeculation are italicized. AHA, American Heart Association; PPV, positive predictive value; NPV, negative predictive value.

Segment #	$F_D$			RS		
	Accuracy	PPV	NPV	Accuracy	PPV	NPV
1	85	89	82	100	100	100
2	65	71	62	95	91	100
3	45	44	46	95	91	100
4	65	67	64	95	91	100
5	75	86	70	100	100	100
6	90	100	83	100	100	100
7	95	100	91	95	100	91
8	55	57	54	90	90	90
9	40	40	40	95	91	100
10	80	100	71	95	91	100
11	75	86	69	100	100	100
12	95	100	91	100	100	100
13	70	75	67	95	100	91
14	60	63	58	95	91	100
15	55	55	56	95	100	91
16	75	86	69	100	100	100

the weights of mode 1 plotted against those of mode 2; subjects falling in the bottom left triangle were classified as true positive and subjects falling in the top right triangle were classified as true negative.

### 3.5 Reproducibility and Threshold Sensitivity

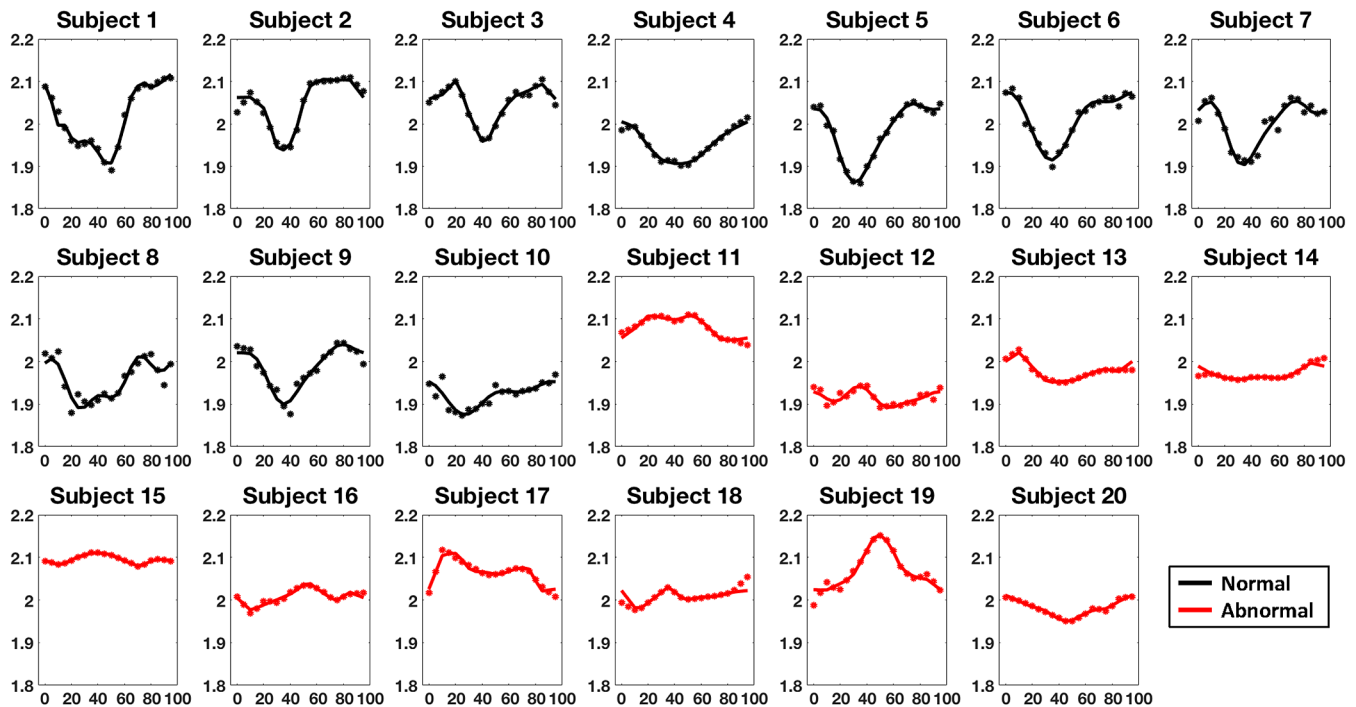
To demonstrate the reproducibility of the regional  $F_D$  estimates, Fig. 12 shows each independently calculated  $F_D$  value at a specific instant of the cardiac cycle overlaid onto the temporally smoothed  $F_D(t)$  profiles in a sample free-wall AHA segment for all 20 subjects in the study. Each time frame was analyzed independently and every third image in these sequences had no views shared in the image reconstruction; therefore, the noise was independent. The  $F_D$  versus time profiles across the cardiac cycle show the natural variability of the data under the assumption that the fractal dimension will evolve with a smooth pattern in time. Figure 12 also highlights the fact that  $\Delta F_D$  is much larger than the variance in independent  $F_D$  estimates around the smooth curve.

Figure 13 shows the sensitivity of  $\Delta F_D$  to the choice of the user input threshold for LV blood volume segmentation. Over

the domain of reasonable threshold values for the LV blood volume, the absolute  $F_D$  estimate will depend on the choice of threshold; hence the change in  $F_D$  between end diastole and end systole ( $\Delta F_D$ ) was used to investigate the sensitivity. Also currently  $\Delta F_D$  is used as the biomarker for differentiating normal from abnormal wall motion. For two sample normal and two sample abnormal subjects, the LV was segmented for thresholds in the range of 100 to 1000 HU. Each subject had a lower limiting threshold value, below which other structures such as the myocardium and the RV were included. Similarly, each subject had an upper limiting threshold value beyond which the LV disintegrated rapidly. Within these limits of relatively stable LV volumes,  $\Delta F_D$  was calculated in a sample free-wall AHA segment for each subject. Figure 13(a) plots the end-systolic volume of the segmented blood pool as a function of threshold and Fig. 13(b) plots the variation in  $\Delta F_D$  within the stable threshold regime [marked with black dots in Fig. 13(a)]. The  $\Delta F_D$  values remained very stable over a wide range of 175 HU, which is well beyond the range of the variation in threshold obtained by the user from the process described in Eq. (1). Figures 13(c) and 13(d) plot  $F_D(t)$  profiles across the cardiac cycle for normal subject 1 [Fig. 13(c)] and for normal subject 2 [Fig. 13(d)] for three different threshold values sampling the range of stable threshold values for blood segmentation. Although the absolute value of  $F_D$  changes as a function of threshold, the temporal curves of both subjects for all three threshold values show a characteristic decrease in  $F_D$  during systolic contraction followed by an increase during diastolic relaxation, highlighting the stability in detecting regional wall motion across the cardiac cycle.

## 4 Discussion

This paper presents an image analysis method that exploits the temporal changes of LV endocardial topography across the cardiac cycle to quantify regional LV function. The method uses scans that can be routinely acquired as part of coronary CT angiography studies or cardiac function assessment, exposing the patient to no additional radiation. The analysis is fast, with fractal computation times of  $\sim 1$  min for 20 time frames running on a personal computer. Of note, the calculation of  $F_D$  does not involve image registration. This feature is of particular practical interest because the nonrigid deformation of the heart and the lack of a significant number of anatomical landmarks complicate cardiac image registration.<sup>24</sup> Additionally, fractal dimension analysis does not require manual contours to be drawn to define the LV endocardium and epicardium, which can be susceptible to inter- and intraobserver variability.<sup>25</sup> With current advances in automatic cardiac segmentation,<sup>26–29</sup> it is reasonable to expect fractal dimension analysis to become fully automated. Since the method is also independent of motion tracking, it can be used to characterize topography even on a single static image of the heart. The proposed analysis may be additionally applicable to the quantification of LVNC.<sup>19</sup> Since LVNC is much less prevalent when compared to LV dysfunction from heart failure or ischemia, we did not study this group of patients. Another possible application of fractal dimension is the quantification of left atrial appendage function, which currently lacks a robust quantitative method. Additionally, we are also encouraged by the fact that motion-estimation and motion-compensated reconstruction algorithms<sup>30</sup> will only improve the fidelity of trabeculae seen on the CT images. Previous studies have measured the average fractal dimension over the LV; the work reported here



**Fig. 12** Reproducibility in measurements of regional  $F_D$  estimates versus  $\%R - R$  in a sample free-wall AHA segment for all 20 subjects. Independent  $F_D$  estimates (dots) calculated at each instant of time of the cardiac cycle overlaid onto the temporally smoothed  $F_D(t)$  profiles. Variance in the independent  $F_D$  estimates around the temporally smoothed curves provides an estimate of the reproducibility. AHA, American Heart Association.

relates changes in regional  $F_D$  values of the LV endocardium to local myocardial function for the first time. This work also demonstrates that previously reported average values of fractal dimension ignore the fact that the smooth surface of the septum is quite distinct from the free wall.

The image sequences used in this study were obtained using CT scanner manufacturers' standard reconstruction algorithms as implemented clinically. Images spanning the complete cardiac cycle were acquired over a single heartbeat, which is a significant advantage over other imaging modalities requiring multiple beat acquisitions to produce a 3-D volume. Echocardiography is the most widespread modality to assess regional cardiac function in the clinical setting. However, it depends on the skill of the sonographer<sup>31</sup> and often involves the semiquantitative visual assessment of regional wall motion,<sup>32,33</sup> leading to significant inter- and intraobserver variability.<sup>34,35</sup> Moreover, echocardiographic 2-D assessment of wall motion may not fully capture the complicated 3-D motion of the heart and may be affected by tissue entering and leaving the imaging plane.<sup>36</sup> CMR tissue tagging is the current gold standard in the assessment of regional cardiac function.<sup>37-40</sup> However, its use has primarily remained in the research setting due to the requirements of extended breath holding and multiple heartbeat acquisitions, together with its limited resolution.<sup>41</sup> Additionally, the application of CMR in patients implanted with some metallic devices, particularly cardiac assisting devices (pacemakers, LVADs, etc.), is limited.

Although only a small cohort of normal and abnormal subjects was used in this study, as a proof of concept, our results highlight the ability of fractal dimension analysis to differentiate between normal and abnormal free-wall motion by evaluating the changes in regional values of  $F_D$  across the cardiac cycle.

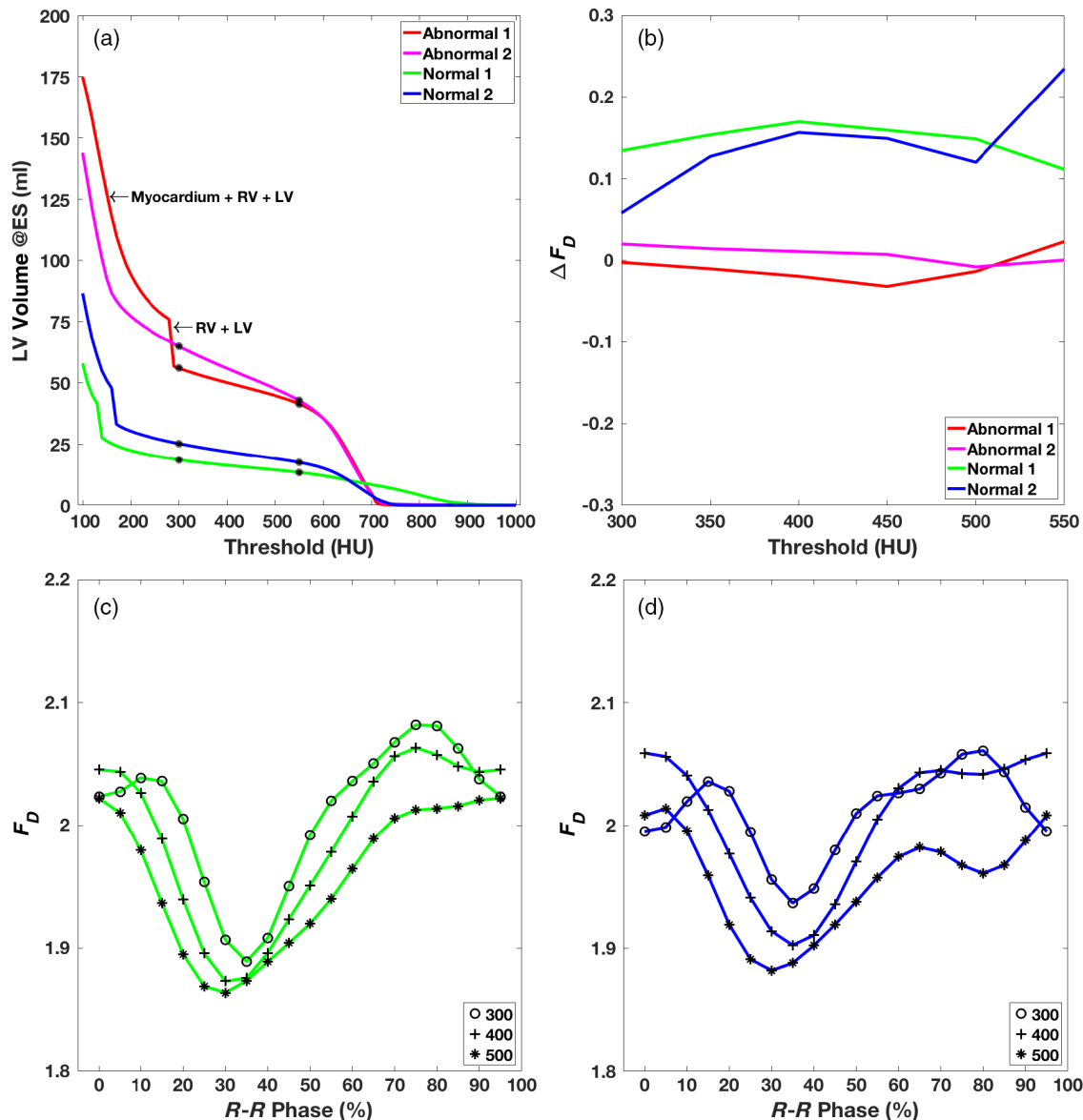
Reproducible  $F_D$  estimates were obtained, which were stable across a wide range of user input thresholds for LV blood segmentation. The method can obtain functional estimates from just the end-diastolic and end-systolic phases of the cardiac cycle, thereby reducing patient exposure to ionizing radiation. Furthermore, we found that  $\Delta F_D$  correlated well with peak end-systolic radial strain in the free-wall segments of the LV. Finally, we demonstrated as a proof of principle that the fractal dimension versus time data can be analyzed using simple well-known tools such as PCA to potentially classify subjects as normal or abnormal based on regional LV function.

#### 4.1 Limitations

Although it is clear that wall motion across the cardiac cycle leads to temporal changes in endocardial  $F_D$ , an explicit relationship between wall strain and  $F_D$  is yet to be established. The trabeculae in the heart are irregular in structure and vary between individuals,<sup>42,43</sup> which make it challenging to derive baseline values of normal and abnormal function. The septal wall has little trabeculation, especially near the LV outflow tract; therefore, its topography remains smooth with small changes in  $F_D$  across the cardiac cycle, even in ventricles with normal function. Thus fractal dimension analysis will likely only be applicable to nonseptal regions.

Although we have shown in this study that fractal dimension analysis quantifies regional LV function that correlated well with radial strain and with endocardial RS measurements from CT, we did not perform a head-to-head validation in patients with CMR tagging, the gold-standard imaging modality for strain. The promising initial results presented here motivate future studies to address validation in larger numbers of patients





**Fig. 13** Threshold sensitivity analysis: (a) LV volume at end systole as a function of threshold for two sample normal and two sample abnormal subjects. (b) Variation of  $\Delta F_D$  in the regime of stable threshold values for each subject in a sample free-wall AHA segment. The stable threshold regime is marked with black dots in (a). (c)  $F_D(t)$  profiles across the cardiac cycle for normal subject 1 for three different threshold values sampling the stable threshold regime. (d)  $F_D(t)$  profiles across the cardiac cycle for normal subject 2 for three different threshold values sampling the stable threshold regime. AHA, American Heart Association.

and to determine the extent of the LV for which fractal dimension analysis can be used.

Currently, our image processing pipeline requires the user to input a threshold value for LV blood volume segmentation. Although this is not ideal, we note that the aim of this work was to evaluate the feasibility of using topography variation as a surrogate measure of cardiac function, rather than to develop an optimized segmentation algorithm. Given the current advances in machine assisted segmentation techniques, such as convolutional neural networks,<sup>26–29</sup> we expect that the choice of threshold will very shortly not be subject to interuser variability.

Low x-ray dosage implies low SNR of the images, which in turn has the potential to affect the imaged topography of the endocardium, especially if it introduces the need for additional

smoothing during CT image reconstruction. Thus dose modulated scans might offer inconsistent topography across the cardiac cycle, which could introduce artifacts in the temporal changes of  $F_D$ . Future work should address the effects of dose and dose modulation on the computed values of fractal dimension.

Although we have demonstrated the applicability of the method to images acquired with standard clinical protocols, the variability in CT image acquisition (different scanner models) and CT image reconstruction (different fields of view, slice thicknesses, and reconstruction kernels) of these images may introduce biases in the fractal dimension estimates. A study investigating the independent effects of these scan parameters needs to be undertaken.

## 5 Appendix A: Validation of the Box-Counting Algorithm

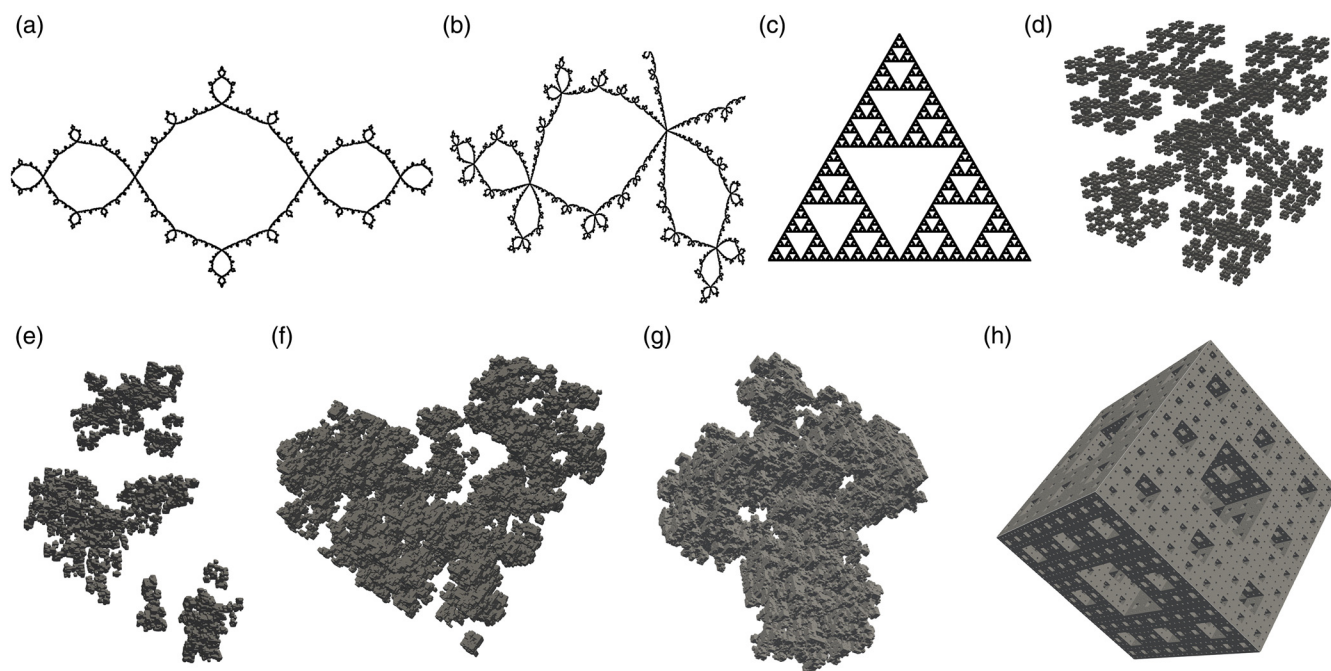
The box-counting algorithm developed in-house, which was implemented in the FORTRAN programming language, was validated on synthetically created images of standard fractals well known in the literature. Three Euclidean 2-D synthetic fractals [Julia set ( $c = -1$ ), Julia set ( $c = -0.123 + 0.745i$ ), and Sierpinski triangle] and five Euclidean 3-D synthetic fractals (3-D cantor cube, 3-D random cantor dust ( $p = 0.5$ ), 3-D random cantor dust ( $p = 0.6$ ), 3-D random cantor dust ( $p = 0.7$ ), and Menger sponge) were created, as shown in Fig. 14. Table 2 summarizes the resolutions, the theoretical and computed fractal dimensions, and the percent error between the two values for each test fractal.

### Disclosures

Dr. McVeigh holds founder shares in MR Interventions Inc. Dr. McVeigh receives research funding from GE Healthcare, Tendyne Holdings Inc., and Pacesetter Inc. No other author has any conflict.

### Acknowledgments

This work was funded in part by the University of California President's Postdoctoral Fellowship Program (Francisco Contijoch) and the NIH Grant Nos. T32 HL105373 "Integrative Bioengineering of Heart, Vessels, and Blood" (Gabrielle Colvert) and R01 HL144678 (Elliot McVeigh).



**Fig. 14** Theoretical fractals used for validating the in-house developed box-counting algorithm: (a) Julia set ( $c = -1$ ), (b) Julia set ( $c = -0.123 + 0.745i$ ), (c) Sierpinski triangle, (d) 3-D cantor cube, (e) 3-D random cantor dust ( $p = 0.5$ ), (f) 3-D random cantor dust ( $p = 0.6$ ), (g) 3-D random cantor dust ( $p = 0.7$ ), and (h) Menger sponge.

**Table 2** Summary of the theoretical and computed fractal dimensions for the eight synthetic standard fractal images.

Standard fractal	Resolution (pixels)	Theoretical dimension	Computed dimension	% Error
A. Julia set ( $c = -1$ )	10,000 × 10,000	1.27	1.23	3
B. Julia set ( $c = -0.123 + 0.745i$ )	10,000 × 10,000	1.39	1.37	1.4
C. Sierpinski triangle	10,000 × 10,000	1.58	1.58	0
D. 3-D cantor cube	243 × 243 × 243	1.89	1.89	0
E. 3-D random cantor dust ( $p = 0.5$ )	256 × 256 × 256	2	1.9	5
F. 3-D random cantor dust ( $p = 0.6$ )	256 × 256 × 256	2.26	2.25	0.4
G. 3-D random cantor dust ( $p = 0.7$ )	256 × 256 × 256	2.49	2.49	0
H. Menger sponge	243 × 243 × 243	2.72	2.72	0

## References

1. B. H. Amundsen et al., "Noninvasive myocardial strain measurement by speckle tracking echocardiography: validation against sonomicrometry and tagged magnetic resonance imaging," *J. Am. Coll. Cardiol.* **47**(4), 789–793 (2006).
2. C. C. Moore, E. R. McVeigh, and E. A. Zerhouni, "Noninvasive measurement of three-dimensional myocardial deformation with tagged magnetic resonance imaging during graded local ischemia," *J. Cardiovasc. Magn. Reson.* **1**(3), 207–222 (1999).
3. G. Y. Cho et al., "Global 2-dimensional strain as a new prognosticator in patients with heart failure," *J. Am. Coll. Cardiol.* **54**(7), 618–624 (2009).
4. P. Thavendiranathan et al., "Use of myocardial strain imaging by echocardiography for the early detection of cardiotoxicity in patients during and after cancer chemotherapy: a systematic review," *J. Am. Coll. Cardiol.* **63**(25 part A), 2751–2768 (2014).
5. F. W. Prinzen et al., "Mapping of regional myocardial strain and work during ventricular pacing: experimental study using magnetic resonance imaging tagging," *J. Am. Coll. Cardiol.* **33**(6), 1735–1742 (1999).
6. C. Leclercq et al., "Systolic improvement and mechanical resynchronization does not require electrical synchrony in the dilated failing heart with left bundle-branch block," *Circulation* **106**(14), 1760–1763 (2002).
7. K. Kalam, P. Otahal, and T. H. Marwick, "Prognostic implications of global LV dysfunction: a systematic review and meta-analysis of global longitudinal strain and ejection fraction," *Heart* **100**(21), 1673–1680 (2014).
8. S. I. Choi et al., "Recent developments in wide-detector cardiac computed tomography," *Int. J. Cardiovasc. Imaging* **25**(suppl 1), 23–29 (2009).
9. K. Kitagawa et al., "Prospective ECG-gated 320 row detector computed tomography: implications for CT angiography and perfusion imaging," *Int. J. Cardiovasc. Imaging* **25**(suppl 2), 201–208 (2009).
10. F. J. Rybicki et al., "Initial evaluation of coronary images from 320-detector row computed tomography," *Int. J. Cardiovasc. Imaging* **24**(5), 535–546 (2008).
11. K. H. Schuleri, R. T. George, and A. C. Lardo, "Applications of cardiac multidetector CT beyond coronary angiography," *Nat. Rev. Cardiol.* **6**(11), 699–710 (2009).
12. M. L. Steigner et al., "Narrowing the phase window width in prospectively ECG-gated single heart beat 320-detector row coronary CT angiography," *Int. J. Cardiovasc. Imaging* **25**(1), 85–90 (2009).
13. A. Pourmorteza et al., "A new method for cardiac computed tomography regional function assessment: stretch quantifier for endocardial engraved zones (SQUEEZ)," *Circ. Cardiovasc. Imaging* **5**(2), 243–250 (2012).
14. J. C. Mceachen and J. S. Duncan, "Shape-based tracking of left ventricular wall motion," *IEEE Trans. Med. Imaging* **16**(3), 270–283 (1997).
15. J. S. Duncan et al., "Measurement of end diastolic shape deformity using bending energy," in *Comput. Cardiol.*, pp. 277–280 (1988).
16. B. B. Mandelbrot, *The Fractal Geometry of Nature*, WH Freeman, New York (1983).
17. A. Fournier, D. Fussell, and L. Carpenter, "Computer rendering of stochastic models," *Commun. ACM* **25**(6), 371–384 (1982).
18. B. Moore and L. Prasad Dasi, "Quantifying left ventricular trabeculae function—application of image-based fractal analysis," *Physiol. Rep.* **1**(4), e00068 (2013).
19. G. Captur et al., "Quantification of left ventricular trabeculae using fractal analysis," *J. Cardiovasc. Magn. Reson.* **15**, 36 (2013).
20. T. Yingchoncharoen et al., "Normal ranges of left ventricular strain: a meta-analysis," *J. Am. Soc. Echocardiogr.* **26**(2), 185–191 (2013).
21. R. C. Gonzalez and R. E. Woods, *Digital Image Processing*, 3rd ed., Pearson, Upper Saddle River, New Jersey (2007).
22. M. D. Cerqueira et al., "Standardized myocardial segmentation and nomenclature for tomographic imaging of the heart—a statement for healthcare professionals from the Cardiac Imaging Committee of the Council on Clinical Cardiology of the American Heart Association," *Int. J. Cardiovasc. Imaging* **18**(1), 539–542 (2002).
23. A. Pourmorteza et al., "Correlation of CT-based regional cardiac function (SQUEEZ) with myocardial strain calculated from tagged MRI: an experimental study," *Int. J. Cardiovasc. Imaging* **32**(5), 817–823 (2016).
24. T. Mäkelä et al., "A review of cardiac image registration methods," *IEEE Trans. Med. Imaging* **21**(9), 1011–1021 (2002).
25. T. D. Karamitsos et al., "Operator induced variability in left ventricular measurements with cardiovascular magnetic resonance is improved after training," *J. Cardiovasc. Magn. Reson.* **9**(5), 777–783 (2007).
26. R. P. K. Poudel, P. Lamata, and G. Montana, "Recurrent fully convolutional neural networks for multi-slice MRI cardiac segmentation," *Lect. Notes Comput. Sci.* **10129**, 83–94 (2017).
27. L. K. Tan et al., "Convolutional neural network regression for short-axis left ventricle segmentation in cardiac cine MR sequences," *Med. Image Anal.* **39**, 78–86 (2017).
28. J. Lieman-Sifry et al., "Fastventricle: cardiac segmentation with ENet," *Lect. Notes Comput. Sci.* **10263**, 127–138 (2017).
29. R. V. Stebbing et al., "Data-driven shape parameterization for segmentation of the right ventricle from 3D+t echocardiography," *Med. Image Anal.* **21**(1), 29–39 (2015).
30. Q. Tang et al., "A fully four-dimensional, iterative motion estimation and compensation method for cardiac CT," *Med. Phys.* **39**(7), 4291–4305 (2012).
31. H. F. Kuecherer et al., "Echocardiography in serial evaluation of left ventricular systolic and diastolic function: importance of image acquisition, quantitation, and physiologic variability in clinical and investigational applications," *J. Am. Soc. Echocardiogr.* **4**(3), 203–214 (1991).
32. R. M. Lang et al., "Recommendations for chamber quantification: a report from the American Society of Echocardiography's Guidelines and Standards Committee and the Chamber Quantification Writing Group, developed in conjunction with the European Association of Echocardiography, a branch of the European Society of Cardiology," *J. Am. Soc. Echocardiogr.* **18**(12), 1440–1463 (2005).
33. J. S. Gottdiener et al., "American Society of Echocardiography recommendations for use of echocardiography in clinical trials: a report from the American Society of Echocardiography's Guidelines and Standards Committee and the task force on echocardiography in clinical trials," *J. Am. Soc. Echocardiogr.* **17**(10), 1086–1119 (2004).
34. A. Suinesiaputra et al., "Automated detection of regional wall motion abnormalities based on a statistical model applied to multislice short-axis cardiac MR images," *IEEE Trans. Med. Imaging* **28**(4), 595–607 (2009).
35. D. S. Blondheim et al., "Reliability of visual assessment of global and segmental left ventricular function: a multicenter study by the Israeli Echocardiography Research Group," *J. Am. Soc. Echocardiogr.* **23**(3), 258–264 (2010).
36. V. C. C. Wu et al., "Effect of through-plane and twisting motion on left ventricular strain calculation: direct comparison between two-dimensional and three-dimensional speckle-tracking echocardiography," *J. Am. Soc. Echocardiogr.* **26**(11), 1274–1281.e4 (2013).
37. M.-Y. Jeung et al., "Myocardial tagging with MR imaging: overview of normal and pathologic findings," *RadioGraphics* **32**(5), 1381–1398 (2012).
38. H. Wang and A. A. Amini, "Cardiac motion and deformation recovery from MRI: a review," *IEEE Trans. Med. Imaging* **31**(2), 487–503 (2012).
39. C. Ozturk, J. A. Derbyshire, and E. R. McVeigh, "Estimating motion from MRI data," *Proc. IEEE* **91**(10), 1627–1648 (2003).
40. E.-S. H. Ibrahim, "Myocardial tagging by cardiovascular magnetic resonance: evolution of techniques—pulse sequences, analysis algorithms, and applications," *J. Cardiovasc. Magn. Reson.* **13**(1), 36 (2011).
41. E. R. McVeigh, "Regional myocardial function," *Cardiol. Clin.* **16**(2), 189–206 (1998).
42. S. K. Kohli et al., "Diagnosis of left-ventricular non-compaction in patients with left-ventricular systolic dysfunction: time for a reappraisal of diagnostic criteria?" *Eur. Heart J.* **29**(1), 89–95 (2008).
43. N. Kawel et al., "Trabeculated (noncompacted) and compact myocardium in adults: the multi-ethnic study of atherosclerosis," *Circ. Cardiovasc. Imaging* **5**(3), 357–366 (2012).

**Ashish Manohar** received his BE degree from the R.V. College of Engineering, India and his MS degree from University of California San Diego, USA, both in mechanical engineering. He joined the Cardiovascular Imaging Laboratory in 2017, where he is currently

pursuing his doctoral degree in mechanical engineering. His research interests include cardiac function assessment from CT images, and understanding the spatial and temporal resolution limits of 4DCT in the estimation of regional wall motion abnormalities.

**Lorenzo Rossini** received his BS and MSc degree in aerospace engineering from University of Bologna, Italy and Polytechnic University of Torino, Italy, respectively. He completed his PhD in engineering at UC San Diego, USA in 2017 studying cardiac blood flow from different imaging modalities (echocardiography, MRI, CT) and developed tools to assess blood stagnation and the risk of thrombus formation in cardiac chambers. He is currently a postdoctoral scholar at UC San Diego.

**Gabrielle Colvert** received her BS degree in biomedical engineering from the University of Southern California in 2016. Currently, she is a PhD student in bioengineering at UC San Diego in the Cardiovascular

Imaging Lab. She is working on her thesis project, "Comprehensive analysis of endocardial strain using 4DCT," under the guidance of Dr. Elliot McVeigh. She is interested in using noninvasive imaging for earlier diagnosis of cardiac diseases and patient stratification for minimally invasive interventions.

**Elliot R. McVeigh** received his BSc degree in physics and PhD in medical biophysics from the University of Toronto. From 1988 to 1999, he was a member of the faculty in BME and radiology at Johns Hopkins University (JHU). From 2000 to 2007, he was a PI at NIH/NHLBI. From 2007 through 2015, he was chairman of BME at JHU. Since 2015, he has been a professor of bioengineering, radiology, and cardiology at UCSD. His laboratory focuses on creating innovative MRI and CT techniques for diagnosis and guidance of therapy of heart disease.

Biographies of the other authors are not available.